



OFFSHORE



LAND RIG

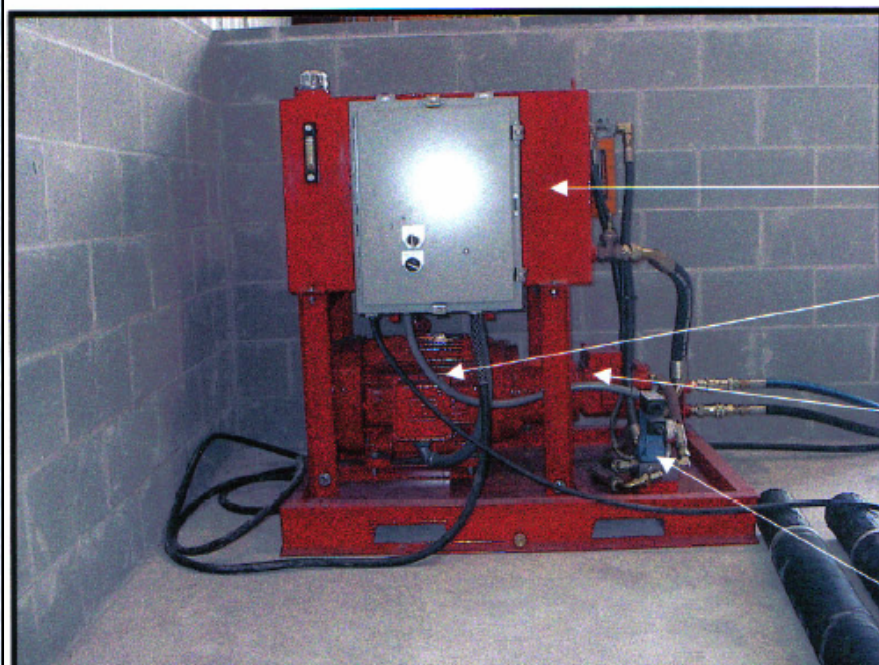
GMCO 280-Ton Swage Press



A-Frame and track with two
¼-ton electric hoist and
trolleys.
110 volt electrical power

Hydraulic power unit.
Two hydraulic hoses connect
power unit to press.

GMCO 280-ton swage press.



Hydraulic power unit.
Measures:
W48"xD32"xH49"
Approximately 700lbs.

50 US Gallon reservoir.

30HP "C" face motor
1,800 rpm 415v/3ph/60hz

Oilgear HP variable volume
pressure compensated pump
5000-psi max. output.

Check valve, relief valve
with all electric 4-way
control valve.



OFFSHORE



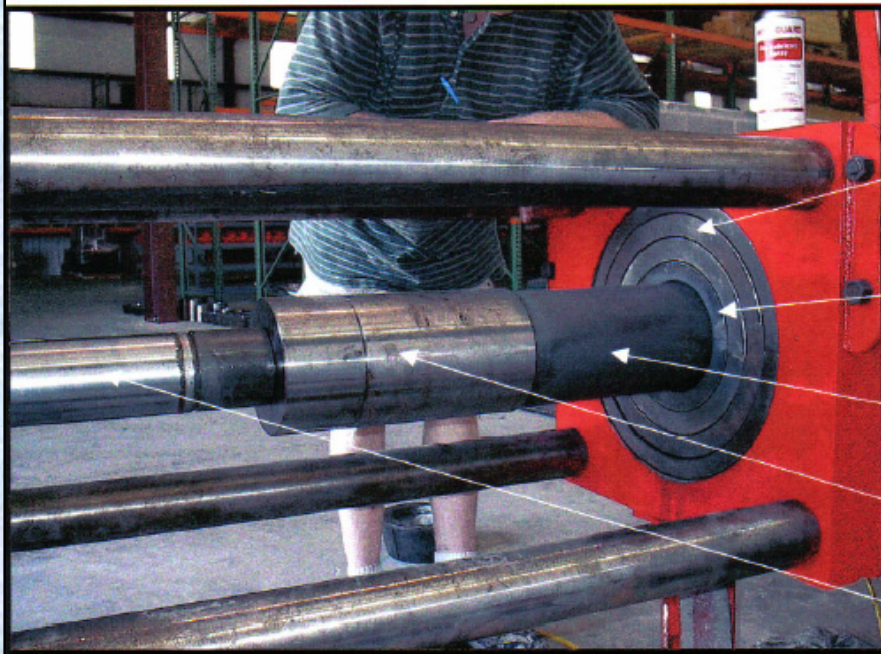
LAND RIG

GMCO 280-Ton Swage Press



Swage Press swaging a 3 1/2" Grade D Rotary Drilling Hose.

Corded remote controls an actuated valve on power unit for full "in" and "out" control of press.



Close-up of swaging operation.

Three spacer rings. Rings adapt press for hoses up to 12" ID.

First stage swage die.

3 1/2" x 4" GMCO API Male Threaded Swage Fitting.

4" male pipe pusher.

280-ton press cylinder rod